





## INTRODUCING THE NISSAN QASHQAI AND QASHQAI+2

NISSAN IS NOT ONE FOR COMPROMISE. AND NEITHER ARE YOU. SO WHEN YOU WERE LOOKING FOR A SPORTY, ADVENTUROUS, FAMILY-SIZED VEHICLE, LOADED WITH STREET STYLE AND PACKED WITH STRENGTH - WE DIDN'T TRY AND MEET YOU HALF WAY. IN FACT, WE WENT A DIFFERENT WAY ALTOGETHER AND INVENTED THE WORLD'S FIRST URBAN CROSSOVER. TOUGH AND STYLISH WITH A CHOICE OF HIGH-PERFORMANCE, LOW CONSUMPTION LIGHTWEIGHT ENGINES, NISSAN QASHQAI IS DESIGNED TO COPE WITH INTENSE DRIVING IN ALL ROAD CONDITIONS. AND WITH 21CMS EXTRA, QASHQAI+2 TAKES EVEN MORE ON BOARD. NISSAN QASHQAI AND QASHQAI+2. THE ULTIMATE URBAN CARS.

more on [www.nissan.co.uk/qashqai](http://www.nissan.co.uk/qashqai)

### LOOK & FEEL

EXTERIOR DESIGN	4
INTERIOR DESIGN	12

### TECHNOLOGY & PERFORMANCE

NISSAN CONNECT	16
AUDIO SYSTEM	18
ENGINES	20
NISSAN AROUND VIEW MONITOR	22
TRANSMISSIONS & ALL MODE 4x4	24
SAFETY & SECURITY	26
PANORAMIC GLASS ROOF	28
FLEXIBLE SEVEN-SEATER	30

### STYLE & ACCESSORIES

ACCESSORIES	36
COLOUR & TRIM	38
ALL ABOUT NISSAN	40





# THE ULTIMATE URBANPROOF CROSSOVER

**IT CAME.** It proved. It conquered. QASHQAI and QASHQAI+2:  
the ultimate crossovers master the city.



4  
LOOK & FEEL

5  
EXTERIOR DESIGN

[Contents](#) | [Exterior design](#) | [Interior design](#) | [Technology & performance](#) | [Style & accessories](#) | [Technical Specifications](#) | [Price List](#) | [Commitments](#)

[Print](#) | [Close](#)

[Page 1](#) | [Page 2](#) | [Page 3](#) | [Page 4](#)







## FINE TUNE YOUR SENSES

**FORGET CITY STYLE.** This is street art - with pronounced wheel arches for more urban presence and new rear lights with distinctive LEDs.

6  
LOOK & FEEL

7  
EXTERIOR DESIGN





# AMPLIFY YOUR OPTIONS

WITH UP TO 7 SEATS AND MORE  
BOOT SPACE IN QASHQAI+2,  
there is more to share.



8  
LOOK & FEEL

Vehicles shown not to UK specification.

9  
EXTERIOR DESIGN

[Contents](#) | [Exterior design](#) | [Interior design](#) | [Technology & performance](#) | [Style & accessories](#) | [Technical Specifications](#) | [Price List](#) | [Commitments](#)

[Print](#) | [Close](#)

[Page 1](#) | [Page 2](#) | [Page 3](#) | [Page 4](#)







## FLEX YOUR MUSCLE

**TOUGHER, LEANER, KEENER.** With an athletic front grille and sleek headlights for dynamic appeal, the mastered crossover is in unbeatable shape.

10  
LOOK & FEEL

11  
EXTERIOR DESIGN

[Contents](#) | [Exterior design](#) | [Interior design](#) | [Technology & performance](#) | [Style & accessories](#) | [Technical Specifications](#) | [Price List](#) | [Commitments](#)

[Print](#) | [Close](#)

[Page 1](#) | [Page 2](#) | [Page 3](#) | [Page 4](#)





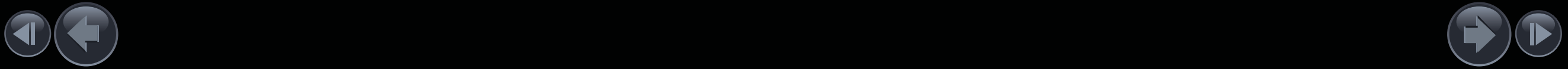


# MAKE YOUR PRESENCE FELT

**LIGHTEN THE ATMOSPHERE.** Enjoy the soothing elegance with natural stone-colour leather seats and a panoramic glass roof.

12  
LOOK & FEEL

13  
INTERIOR DESIGN





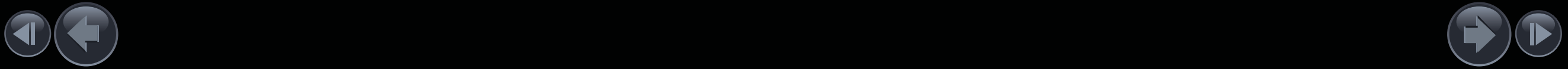


# MASTER YOUR PERFORMANCE

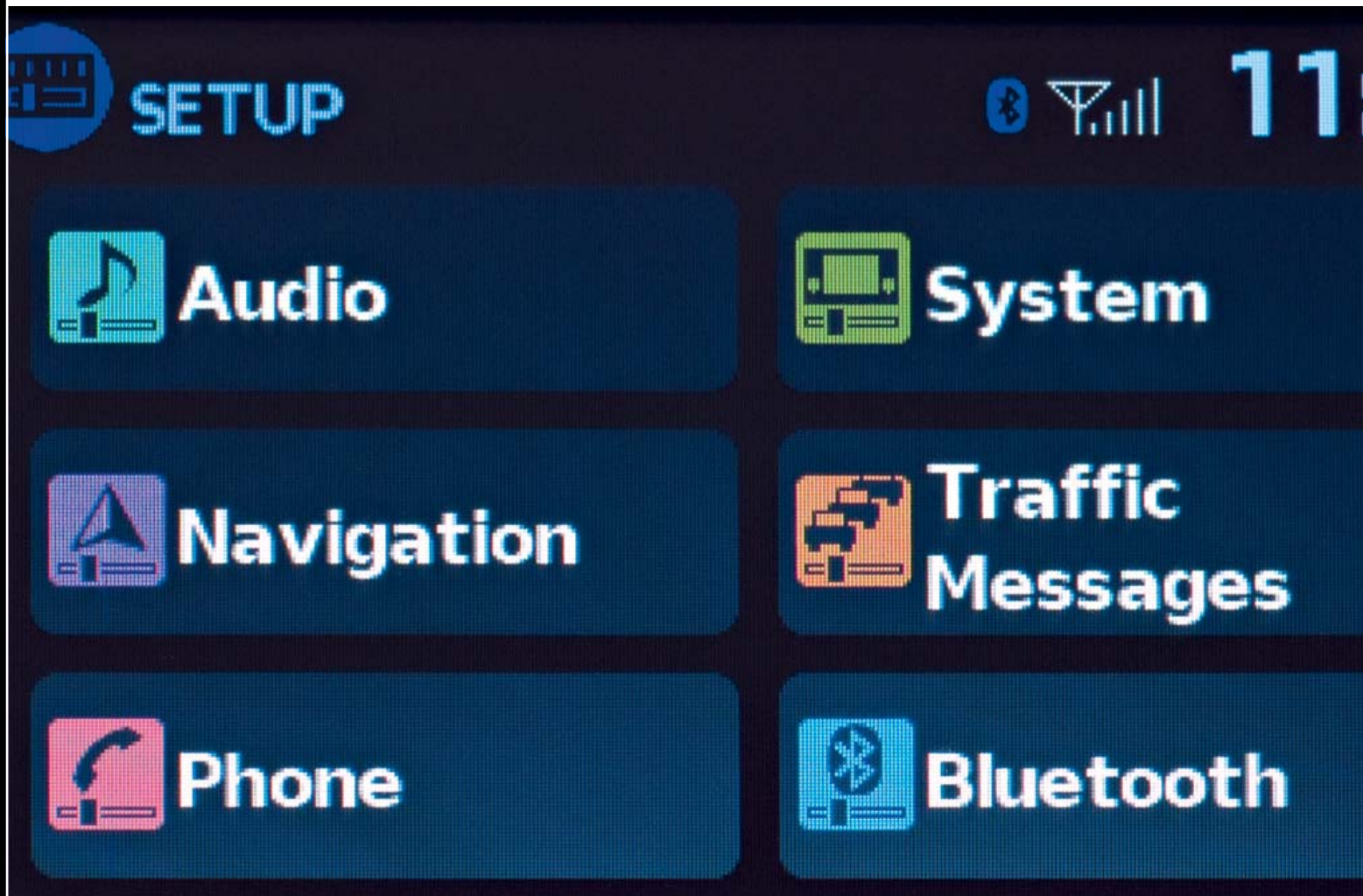
**SEE MORE, HEAR MORE, KNOW MORE** with Nissan Connect, your fully-integrated navigation, communication and audio-entertainment system. You've got the kit; now go explore the urban jungle

14  
LOOK & FEEL

15  
INTERIOR DESIGN







USB or Bluetooth®  
fully integrated navigation  
NISSAN CONNECT GENUINE SYSTEM

## DON'T STOP UNTIL YOU GET ENOUGH

THE BIG PICTURE IS ALWAYS AT YOUR FINGERTIPS WITH  
NISSAN CONNECT.



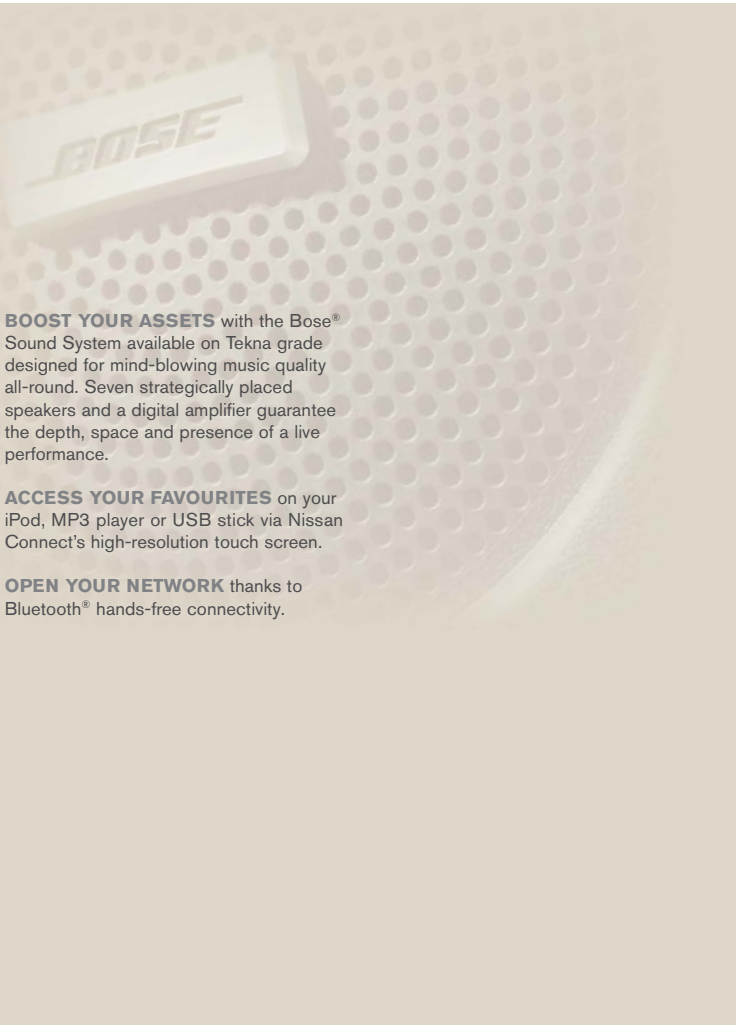
**PLAN.** A 5" touch-screen displays optimal routes, music and info-alerts and even your phone book and personal files.

**TRACK.** High-resolution 2D or 3D maps with auto-zoom on key targets and voice guidance in 9 languages across Europe.

**PLAY.** Listen to CDs in any format, browse with Bluetooth® audio-streaming or opt for the radio and traffic reports at once.







**BOOST YOUR ASSETS** with the Bose® Sound System available on Tekna grade designed for mind-blowing music quality all-round. Seven strategically placed speakers and a digital amplifier guarantee the depth, space and presence of a live performance.

**ACCESS YOUR FAVOURITES** on your iPod, MP3 player or USB stick via Nissan Connect's high-resolution touch screen.

**OPEN YOUR NETWORK** thanks to Bluetooth® hands-free connectivity.

## AMPLIFY YOUR SPACE

THERE'S NOTHING BETTER THAN BOSE® WHEN YOU'RE LOOKING FOR SOME LIVE ACTION.





OPT FOR THE BEST BALANCE IN TERMS OF FUEL CONSUMPTION AND PERFORMANCE: QASHQAI ENGINES ARE DESIGNED TO MEET YOUR EVERY NEED. WITH NISSAN STOP/START SYSTEM NOW AVAILABLE ON BOTH 1.6 DIESEL AND PETROL ENGINES, YOU CAN MAKE A CLEAN-CUT CHOICE.

## MORE EFFICIENT THAN EVER BEFORE

**QASHQAI AND QASHQAI+2** get their zest for driving from refined engines. The new downsized 1.6 dCi 130PS engine offers the best of all worlds: comfort, quietness, improved fuel economy and reduced CO<sub>2</sub> emissions, plus Nissan's Stop/Start System to save you even more energy. For 2 wheel drive versions there's also a choice of 1.6 117PS or 2.0 140PS petrol engines or the efficient 1.5dCi 110PS engine.





Around View Monitor  
NISSAN GENUINE SYSTEM  
birds eye  
view

## USE YOUR EAGLE EYE

PARK WITH FINESSE THANKS TO AROUND VIEW MONITOR. WITH ITS 360° VIEW CAMERA IT GIVES YOU A FULL PANORAMA OF YOUR SELECTED SPOT SO THAT YOU CAN MANOEUVRE WITH MAXIMUM PRECISION.



### SHARPEN YOUR VISION

Using 4 separate wide angle cameras, Nissan Around View Monitor converts the original image on your navigation screen into a bird's eye view.



### CHOOSE YOUR FOCUS

Simple to use – switch from one camera view to another at the touch of one single button.



### MOVE ON IN

Position your QASHQAI using the coloured moving guide lines defining your space and enjoy a perfect parking moment.







## JOIN THE NEW MOVEMENT

**IF YOU WANT TO TAKE IT EASY.** The 1.6 and 2.0 litre petrol engines are available with a smooth CVT gearbox to take the stress out of everyday driving.

If you're feeling adventurous, you can opt for ALL MODE 4x4<sup>®</sup>, available on the 2.0 petrol engine as well as the responsive 1.6dCi and range-topping 2.0dCi engines. It all depends on your urge.

**ROLL 'EM OUT QUIETLY AND CONFIDENTLY** thanks to optimised aero-acoustics and integrated cruise control with speed limiter. Smooth. Streetwise. Mastered. QASHQAI reclaims the city.

NISSAN GENUINE SYSTEM

Automatic torque distribution  
Any conditions

ALL  
MODE  
4x4







6 airbags  
**ABS ESP**  
 MULTI-LINK SUSPENSION

**GO SURELY**

**LARGE DIAMETER BRAKES** with ABS and EBD provide class-leading, progressive stopping power.

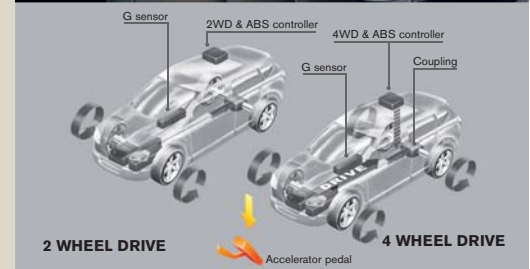
**INDEPENDENT REAR MULTI-LINK SUSPENSION** allows secure cornering and ensures stability at high speeds.

**SIX AIRBAGS AS STANDARD** along with front seatbelt pre-tensioners.

**INTELLIGENT PROTECTION** In a rear impact, the front seat active headrests move forward to reduce the risk of whiplash injury.

**ALL MODE 4x4<sup>®</sup>** uses electronic sensors and controls to measure wheel spin and distribute torque automatically, with up to 50% to the rear wheels. Combined with ESP it's even able to control each wheel independently.

**COPE WITH EMERGENCIES CONFIDENTLY** The latest generation ESP helps keep you on course, even when making evasive manoeuvres.







## EXTEND YOUR VIEW

ENJOY CLARITY OF MIND  
THANKS TO QASHQAI+2'S  
EXTRA-LONG GLASS ROOF.  
ALSO AVAILABLE ON QASHQAI.

**ELECTRIC SUNSHADE.** Strict intimacy on  
demand for shadier moments.







## INCREASE YOUR CAPACITY

PILE THE WHOLE GANG INTO THIS 7-SEATER AND SHARE YOUR URBAN ADVENTURE.

**AN EXTRA ROW.** With two folding seats and lots of extra storage space, QASHQAI+2 is even more inviting.



seven-seater







## COVER MORE GROUND

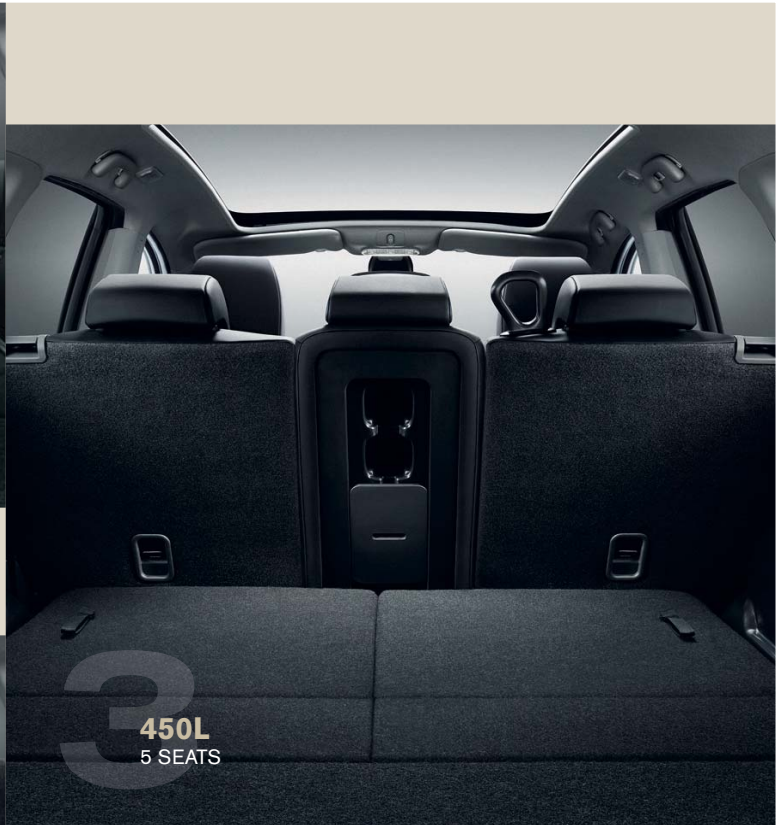
**FOLD THE SEATS DOWN SEPARATELY.** Or fold together to organise by zone or create a free-for-all loading area on a long, flat floor. Now that's true crossover thinking. QASHQAI+2 offers an amazing variety of seating and cargo combinations and gives you a van-like 1520L of space when the 2nd and 3rd rows are down.



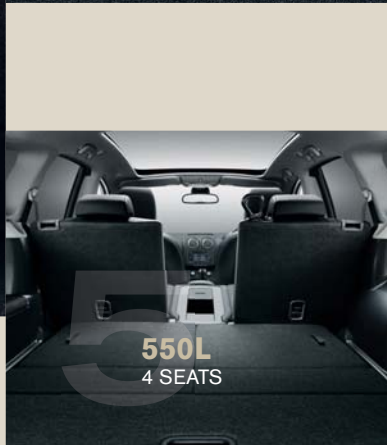
**750L**  
3 SEATS



**390L**  
6 SEATS  
**130L**  
7 SEATS



**450L**  
5 SEATS



**550L**  
4 SEATS



**715L**  
4 SEATS







## KEEP A TIDY MIND

NEAT AND DISCREET. PACK IN ALL YOUR PERSONAL BELONGINGS WITH ROOM TO SPARE: QASHQAI+2 IS FULL OF CLEVER STORAGE SOLUTIONS.



**INGENIOUS CARGO DIVIDER.** When the 3rd row seats are upright, the divider flips up so that you can stow away the pull-out tonneau cover and create even more luggage space.

**LOVE TO TAKE EVERYTHING.** The huge 14L glovebox offers lots of room and can be cooled by the air conditioning.

**AND THERE'S MORE!** Yes, there's even more storage space in the rear door pockets. And they've been stretched for QASHQAI+2 to create more room for drinks and trinkets.

**LOVE THE THOUGHTFULNESS.** The centre console holds up to eight of your favourite CDs plus two drinks cans. And the sliding armrest has storage space underneath.

**FOLD DOWN THE 2ND ROW CENTRE SEAT.** It becomes an armrest, with two cup holders, a concealed storage box for hiding valuable items and an additional 12V power socket.





## ACCESSORIES

- 1) Illuminated entry guards
- 2) Steel loadcarrier with ski/snowboard carrier (up to 4 pairs)
- 3) Soft trunkliner and Tailgate entry guard
- 4) Ambience lighting



- 5) Chrome mirror caps
- 6) Chrome door sill strips
- 7) 18" Accessory alloy wheel
- 8) Chrome fog lamp rings

- 9) Front styling plate
- 10) Velour carpet mats (set of 4)
- 11) Standard mats (set of 4)
- 12) Rubber mats (set of 4)



10-12

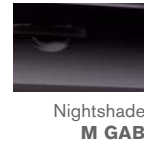
37  
ACCESSORIES





## COLOURS

### CUSTOMISE YOUR QASHQAI



Solid /S - Metallic /M

## TRIMS

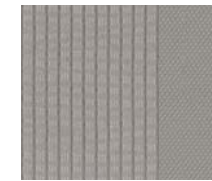
### CRAFT YOUR QASHQAI

#### VISIA

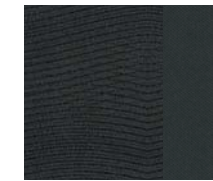


Charcoal Cloth

#### ACENTA & N-TEC+



Stone Cloth



Graphite Cloth

#### TEKNA



Stone Leather



Graphite leather

## ALLOY WHEELS



16" Wheel cover  
(VISIA Pure Drive  
130g)



16" Alloy



17" Alloy

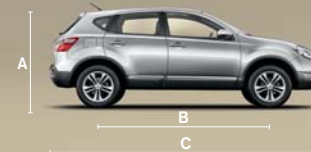


18" 'Onyx' Alloy



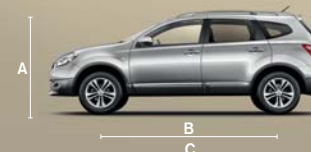
18" 'Pewter' Alloy

## DIMENSIONS



#### QASHQAI

A: Overall height: 1,615mm  
B: Wheelbase: 2,630mm  
C: Overall length: 4,330mm  
D: Overall width\*: 2,120mm



#### QASHQAI+2

A: Overall height: 1,645mm  
B: Wheelbase: 2,765mm  
C: Overall length: 4,541mm  
D: Overall width\*: 2,120mm

\*Width including door mirrors.





## COMMITMENTS

YOU + NISSAN

YOU CARE ABOUT YOUR NISSAN SO NISSAN WILL CARE FOR YOU.  
THAT'S WHY WE'LL MAKE THE FOLLOWING COMMITMENT:

**YOU** care about staying on the road when your Nissan is in for service or repair.

**YOU** care about quality enough to have your Nissan serviced at a Nissan dealership.

**YOU** care about getting the best value for money when it comes to service and repair.

**YOU** care about having your problems resolved quickly.

**YOU** care about getting the right Nissan model, engine & gear box to test drive.

**NISSAN** will keep you mobile free of charge.

**NISSAN** says thanks by giving you continuous RAC roadside assistance for free.

**NISSAN** will price match like for like competitor written quotes within 10 miles of your local dealer.

**NISSAN** will propose how to resolve any problem within 2 working days.

**NISSAN** will guarantee that's what you'll get when you pre-book your test drive either online or through our customer service centre.

YOU + NISSAN  
**CARE**

For terms and conditions, please visit [nissan.co.uk/care](http://nissan.co.uk/care)

40  
ALL ABOUT NISSAN



### AT NISSAN, YOU BRING OUT THE BEST IN US.

You spark our imagination. You provoke our ingenuity. You inspire us to change the rules and innovate. And at Nissan, innovation is not just about additions and extensions; it's about crossing the line to reinvent the status quo. It's about developing unexpected solutions to satisfy your wildest and most pragmatic desires. At Nissan, we design cars, accessories and services that break the mould - making the practical exciting and the exciting practical to offer you a more exhilarating driving experience everyday.



#### NISSAN QASHQAI OFFERS YOU:

**3 YEAR OR 60,000 MILE WARRANTY\***

**12 YEAR ANTI-CORROSION WARRANTY**

**12 MONTH OR 18,000 MILE SERVICE INTERVAL\***

\* Whichever comes first







visit our website at: [www.nissan.co.uk/qashqai](http://www.nissan.co.uk/qashqai)

Every effort has been made to ensure that the content of this publication is correct at the time of going to press (October 2011). This brochure has been produced featuring prototype vehicles exhibited at motor shows. Images shown in this brochure are for guidance purposes and are not necessarily representative of any particular grade. In accordance with the company's policy of continuously improving its products, Nissan International reserves the right to change at any time the specification and the vehicles described and shown in this publication. Nissan dealers will be informed of any such modifications as quickly as possible. Please check with your local Nissan dealer to receive the most up-to-date information. Because of the limitations of the printing processes used, the colours shown in this brochure may differ slightly from the actual colours of the paint and interior trim materials used. All rights reserved. Reproduction in whole or part of this brochure without the written permission of Nissan International is forbidden.

This brochure is made from chlorine free paper – QASHQAI SV4 GEA 10/2011 – Printed in EU. Part No. 99999-54030.  
Created by NEW BBDO, France – Tel.: +33 1 40 62 37 37 and produced by E-GRAFICS\FRANCE, France – Tel.: +33 1 49 09 25 35.



SHIFT\_ the way you move

Dealer stamp:



**NISSAN QASHQAI  
AND QASHQAI+2**  
TECHNICAL SPECIFICATIONS





All four QASHQAI grades feature a level of specification that is far from 'standard'. Whatever the grade, it has the power, performance and equipment to take on – and win in – the modern world; the urban world.



## QASHQAI GRADES

### VISIA

#### TECHNOLOGY

- Chrome-trimmed LCD combimeter
- Drive computer
- Audio with Bluetooth compatibility
- Diesel Particulate Filter\*

#### COMFORT AND CONVENIENCE

- Front and rear power windows with one-touch and anti-trap device (driver's side only)
- Electrically adjustable and heated door mirrors
- Tilt and telescopic steering wheel adjustment
- Electric speed-sensitive power steering
- Front 12v power socket
- Remote audio control
- Ambient footwell lighting

#### HEATING, VENTILATION AND VISIBILITY

- Manual air conditioning
- Pollen filter
- 2 Speed wiper with variable intermittent
- Rear wiper with intermittent

#### SEATING, TRIM AND STORAGE

- Charcoal cloth trim
- Height adjustable driver seat
- 14-Litre glovebox with lamp and damped opening
- Front centre console and armrest
- Front cupholders x2
- Asymmetrical rear bench (60:40)
- 410 Litre boot space (VDA)

#### SAFETY

- ESP
- ABS with Brake Assist and EBD
- Driver, passenger, side and curtain airbags
- Active front headrests with height adjustment
- Front seat belts with load limiter and pretensioner
- Front seat belt height adjustment
- 3 Rear headrests
- 3 x 3 point rear seatbelts with ELR
- ISOFIX childseat anchorage points (rear)
- Rear door child locks

#### SECURITY

- Remote central locking with superlocking
- Speed-sensitive autolock function
- Engine immobiliser
- Ultrasonic alarm system (2.0 petrol, 1.6 dCi and 2.0 dCi only)

#### STYLING

- 16" Alloy wheels\*\*
- Body-coloured front and rear bumpers with black protective cladding
- Black door mirrors and handles
- Black honeycomb front grille

#### IN-CAR ENTERTAINMENT

- CD radio with 4 speakers
- Aux socket for MP3 players

#### OPTIONS AT EXTRA COST

- Metallic paint
- Stop/Start System (1.6 petrol only)

### ACENTA

#### ADDITIONAL TO VISIA GRADE

#### TECHNOLOGY

- Rain-sensing wipers
- Auto lighting system
- Cruise control with speed limiter

#### COMFORT AND CONVENIENCE

- Electric folding door mirrors
- Ultrasonic rear park system (RPS)
- Map reading lamp
- Rear reading lamp

#### HEATING, VENTILATION AND VISIBILITY

- Dual zone climate control air conditioning with glovebox cooler

#### SEATING, TRIM AND STORAGE

- Graphite or Stone cloth trim
- Driver's seat lumbar support
- Driver and passenger front seatback pockets
- Leather steering wheel

- Leather gear knob (manual only)
- Rear seat armrest
- Rear cupholders (in armrest) x2

#### SAFETY

- Front fog lamps

#### SECURITY

- Ultrasonic alarm system (1.6 petrol and 1.5 dCi)

#### STYLING

- 17" Alloy wheels
- Body-coloured door handles and mirrors

#### IN-CAR ENTERTAINMENT

- 2DIN CD player with USB, iPod and aux inputs
- Audio system with 6 speakers

#### OPTIONS AT EXTRA COST

- Metallic paint
- Stop/Start System (1.6 petrol only)

### n-tec+

#### ADDITIONAL TO ACENTA GRADE

#### TECHNOLOGY

- Nissan Connect 5" touch-screen navigation system
- Around View Monitor 360° bird-view parking assist (in lieu of RPS)
- Colour front, rear and passenger side cameras

#### STYLING

- 18" 'Onyx' alloy wheels
- Panoramic glass roof with one-touch shade
- Rear privacy glass
- Satin silver roof rails
- Aluminium pedals

#### OPTIONS AT EXTRA COST

- Metallic paint
- Stop/Start System (1.6 petrol only)

### TEKNA

#### ADDITIONAL TO n-tec+ GRADE

#### SEATING, TRIM AND STORAGE

- Graphite or Stone leather trim
- Heated front seats

#### STYLING

- 18" 'Pewter' alloy wheels

#### SAFETY

- Xenon clear lens headlamps
- Headlamp washers

#### SECURITY

- Intelligent key

#### IN-CAR ENTERTAINMENT

- 7-Speaker Bose® audio system

#### OPTIONS AT EXTRA COST

- Metallic paint
- Stop/Start System (1.6 petrol only)

\*The 1.5 dCi, 1.6 dCi & 2.0 dCi engines fitted to QASHQAI include a diesel particulate filter (DPF) to reduce emissions and help protect the environment. The functionality of a DPF may not be suitable for all customers. If your journeys are predominantly urban or low speed, a model without a DPF may be a more suitable alternative.

\*\* Except Visia PURE DRIVE 130g variant which comes with 16" steel wheels.



# QASHQAI

		1.6 petrol	1.6 petrol + Stop/Start System	1.6 petrol	2.0 petrol			1.5 dCi* 110PS	1.5 dCi (Eco)* 110PS	1.6 dCi* 130PS + Stop/Start System		2.0 dCi* 150PS
MODEL		2WD		2WD	2WD	2WD	4WD	2WD	2WD	2WD	4WD	4WD
Seating capacity	persons	5										
Available grades		All					n-tec+ and Tekna	All	Visia PURE DRIVE 130g	All	n-tec+ and Tekna	n-tec+ and Tekna
ENGINE												
Engine code		HR16DE			MR20DE			K9K-1.5	K9K-1.5	R9M - 1.6		M1D-2.0
No. of cylinders, configuration		4, in line			4, in line			4, in line	4, in line	4, in line		4, in line
Valves per cylinder		4			4			2	2	4		4
Engine capacity	cm³	1598			1997			1461	1461	1598		1995
Bore x stroke	mm	78x83.6			84x90.1			76x80.5	76x80.5	80x79.5		84x90
Max. engine power <sup>1)</sup>	kW(PS)/rpm	86 (117)/6000			104 (140)/6000			81 (110)/4000	81 (110)/4000	96 (130)/4000		110 (150)/4000
Max. torque <sup>1)</sup>	Nm/rpm	158/4400			196/4800			240/1750	240/1750	320/1750		320/2000
Compression ratio		10.7			10.2			15.3	15.3	15.4		15.6
Fuel type		Petrol			Petrol			Diesel	Diesel	Diesel		Diesel
Fuel tank capacity	l	65										
Ignition system/ Intake system (Diesel)		Electronic distributor - less type			Electronic distributor - less type			Turbo-Charger + Intercooler	Turbo-Charger + Intercooler	Turbo-Charger + Intercooler		Turbo-Charger + Intercooler
Fuel supply		Multi Point Injection			Multi Point Injection			Common Rail Direct Injection	Common Rail Direct Injection	Common Rail Direct Injection		Common Rail Direct Injection
Emission control system		3-Way catalyst			3-Way catalyst			Oxidation catalyst	Oxidation catalyst	Oxidation catalyst with Diesel Particular Filter		Oxidation catalyst with Diesel Particular Filter
Emissions level		EU5										
DRIVE TRAIN												
Transmission type		5-Speed manual		CVT	6-Speed manual		CVT	CVT	6-Speed manual		6-Speed manual	6-Speed automatic
Clutch type	Manual	Dry plate mechanical			Dry plate mechanical			Dry plate mechanical			Dry plate mechanical	
	Auto	Torque converter with lock-up			Torque converter with lock-up			Torque converter with lock-up			Torque converter with lock-up	
Gear ratio	1st	3.727	4.006	3.727	2.349	2.349	3.727	3.727	3.416	3.727	4.199	
	2nd	2.048		2.105			1.947	1.947	1.850	2.043	2.405	
	3rd	1.393		1.519			1.322	1.322	1.193	1.322	1.583	
	4th	1.097		1.171			0.975	0.975	0.850	0.947	1.161	
	5th	0.892		0.914			0.763	0.763	0.673	0.723	0.855	
	6th	-		0.767			0.638	0.638	0.596	0.596	0.685	
	Reverse	3.545	3.770	3.687	1.750	1.750	3.687	3.687	3.252	3.641	3.457	
Final Drive	4.214	3.753	4.438	6.466	6.466	4.438	3.933	4.428	4.266	3.360		
Driven wheels		2WD			2WD	2WD	4WD (full time) / 2WD	2WD	2WD	2WD	4WD (full time) / 2WD	4WD (full time) / 2WD
CHASSIS												
Suspension	front	McPherson Strut										
	rear	Independent Multi-link										
Steering		Rack and Pinion, power assisted										
Braking system		Discs front and rear (Ventilated Discs front), power assisted, ABS incl EBD and Brake Assist										
Stability control system		Electronic Stability Program (ESP)										
Wheel size		16x6.5JJ, 17x6.5JJ, 18x6.5JJ						16x6.5JJ	16x6.5JJ, 17x6.5JJ, 18x6.5JJ			

\*The 1.5 dCi, 1.6 dCi & 2.0 dCi engines fitted to QASHQAI include a diesel particulate filter (DPF) to reduce emissions and help protect the environment. The functionality of a DPF may not be suitable for all customers. If your journeys are predominantly urban or low speed, a model without a DPF may be a more suitable alternative.  
 1) In accordance with 1999/99/EC.





# QASHQAI

		1.6 petrol	1.6 petrol + Stop/Start System	1.6 petrol	2.0 petrol			1.5 dCi* 110PS	1.5 dCi(Eco)* 110PS	1.6 dCi* 130PS + Stop/Start System		2.0 dCi* 150PS	
MODEL		2WD		2WD	2WD	2WD	4WD	2WD	2WD	2WD	4WD	4WD	
Seating capacity	persons	5											
Available grades		All		All	All	n-tec+ and Tekna	All	Visia PURE DRIVE 130g	All	n-tec+ and Tekna	n-tec+ and Tekna		
WEIGHTS & DIMENSIONS													
Transmission type		5-Speed manual		CVT	6-Speed manual	CVT	CVT	6-Speed manual	6-Speed manual	6-Speed manual		6-Speed automatic	
Kerb weight min./max. 2)	kg	1297/1392	1312/1407	1344/1415	1356/1437	1378/1459	1454/1535	1418/1482		1498/1566	1562/1630	1604/1674	
Gross Vehicle Weight	kg	1830		1830	1960	1960		1930		2085	2100	2085	
Max. payload 2)	kg	415		415	415	415		415		415		415	
Max. axle weight (PAW)	front	kg	1150	1150	1150	1150		1150		1150		1150	
	rear	kg	1000	1000	1100	1100		1100		1100		1100	
Max. trailer weight	braked	kg	1200	700	1400	1200		1200		1400		1350	
	unbraked	kg	685	685	685	685	740	740		750		750	
Max. vert. load on coupling point	kg	75											
Max. roof Load	kg	75											
Overall length	mm	4330											
Width excluding mirrors	mm	1780											
Width including mirrors	mm	2120											
Overall height (with roof rails)	mm	1615 (1622)											
Wheelbase	mm	2630											
Track	front	mm	1540										
	rear	mm	1550										
Luggage space	max. length	mm	900										
	max. width	mm	1100										
	max. height to p/shelf	mm	505										
Luggage capacity	VDA	l	410										
	max. with folded seats (VDA)	l	860										
Min. turning circle (kerb to kerb)	m	10.6											
PERFORMANCE													
Fuel consumption 3)	Urban cycle	mpg (l/100 km)	35.8 (7.9)	37.7 (7.5)	34.9 (8.1)	27.2 (10.4)	28.0 (10.1)	26.6 (10.6)	44.8 (6.3)	47.9 (5.9)	51.4 (5.5)	46.3 (6.1)	31.0 (9.1)
	Extra-urban	mpg (l/100 km)	54.3 (5.2)	56.5 (5.0)	52.3 (5.4)	44.8 (6.3)	45.6 (6.2)	43.5 (6.5)	61.4 (4.6)	64.2 (4.4)	72.4 (3.9)	61.4 (4.6)	48.7 (5.8)
	Combined	mpg (l/100 km)	45.6 (6.2)	47.9 (5.9)	44.1 (6.4)	36.2 (7.8)	37.2 (7.6)	35.3 (8.0)	54.3 (5.2)	57.6 (4.9)	62.8 (4.5)	55.4 (5.1)	40.4 (7.0)
CO2 mass emission (combined)	g/km	144	139	149	184	179	189	137	130	119	135	184	
Max. speed	mph (km/h)	113 (181)	113 (181)	108 (174)	121 (195)	114 (183)	113 (181)	110 (177)	109 (176)	118 (190)	118 (190)	117 (188)	
Acceleration 0-62mph (0 - 100 km/h)	sec	11.9	11.9	13.0	10.1	10.7	11.3	12.4	12.7	10.3	10.9	11.0	

2) Figures in accordance with EC Directive. Kerb weight condition is without driver and including coolant, oils, fuel, spare wheel and tools. Payload will be reduced depending on the options and/or accessories installed.

3) In accordance with 1999/100/EC. (Optional equipment, maintenance, driving behaviour, road and weather conditions may affect the official results)

\* The 1.5 dCi, 1.6 dCi & 2.0 dCi engines fitted to QASHQAI include a diesel particulate filter (DPF) to reduce emissions and help protect the environment. The functionality of a DPF may not be suitable for all customers. If your journeys are predominantly urban or low speed, a model without a DPF may be a more suitable alternative.



All four QASHQAI+2 grades feature a level of specification that is far from 'standard'. Whatever the grade, it has the power, performance and equipment to take on – and win in – the modern world; the urban world.



## QASHQAI+2 GRADES

### VISIA

#### TECHNOLOGY

- Chrome-trimmed LCD combimeter
- Drive computer
- Audio with Bluetooth compatibility
- Diesel Particulate Filter\*

#### COMFORT AND CONVENIENCE

- Front and rear power windows with one touch and anti-trap device (driver's side only)
- Electrically adjustable and heated door mirrors
- Tilt and telescopic steering wheel adjustment
- Electric speed-sensitive power steering
- Front 12v power socket
- Remote audio control
- Ambient footwell lighting

#### HEATING, VENTILATION AND VISIBILITY

- Manual air conditioning
- Pollen filter
- 2 Speed wiper with variable intermittent
- Rear wiper with intermittent

#### SEATING, TRIM AND STORAGE

- Charcoal cloth trim
- Height adjustable driver's seat
- 14-Litre glove box with lamp and damped opening
- Front centre console and armrest
- Front cupholders x2
- Asymmetrical sliding 2nd row bench (60:40 split)
- Middle row seat backs with 40:20:40 split
- Middle row armrest with storage, cup holders and 12V power socket
- 450 Litre boot space (VDA) with 3rd row seats folded
- 1,520 Litre boot space (VDA) with 2nd and 3rd row seats folded
- Flat Fold rear seats with 50:50 split
- Underfloor storage / cargo divider

#### SAFETY

- ESP
- ABS with Brake Assist and EBD
- Driver, passenger, side and curtain airbags
- Active front headrests with height adjustment
- Front seat belts with load limiter and pretensioner
- Front seat belt height adjustment
- 3 rear headrests
- 5 x 3 point rear seatbelts with ELR
- ISOFIX childseat anchorage points (middle row)
- Rear door child locks

#### SECURITY

- Remote central locking with superlocking
- Speed sensitive autolock function
- Engine immobiliser
- Ultrasonic alarm system

\*The 1.5 dCi, 1.6 dCi & 2.0 dCi engines fitted to QASHQAI+2 include a diesel particulate filter (DPF) to reduce emissions and help protect the environment. The functionality of a DPF may not be suitable for all customers. If your journeys are predominantly urban or low speed, a model without a DPF may be a more suitable alternative.

#### STYLING

- 17" Alloy wheels on 2.0 petrol, 1.6 dCi engines
- 16" Alloy wheels on 1.6 petrol and 1.5 dCi engines
- Body-coloured front and rear bumpers with black protective cladding
- Black door mirrors and handles
- Black honeycomb front grille
- Rear privacy glass

#### IN-CAR ENTERTAINMENT

- CD radio with 4 speakers
- Aux socket for MP3 players

#### OPTIONS AT EXTRA COST

- Metallic paint
- Stop/Start System (1.6 petrol only)

### ACENTA

#### ADDITIONAL TO VISIA GRADE

#### TECHNOLOGY

- Rain-sensing wipers
- Auto lighting system
- Cruise control with speed limiter

#### COMFORT AND CONVENIENCE

- Electric folding door mirrors
- Ultrasonic rear park system (RPS)
- Map reading lamp
- Rear reading lamp

#### HEATING, VENTILATION AND VISIBILITY

- Dual zone climate control air conditioning with glovebox cooler

#### SEATING, TRIM AND STORAGE

- Graphite or Stone cloth trim
- Driver's seat lumbar support
- Driver and passenger front seat-back pockets
- Leather steering wheel
- Leather gear knob (manual only)

#### SAFETY

- Front fog lamps

#### STYLING

- 17" Alloy wheels
- Panoramic glass roof with one-touch shade
- Body-coloured door handles and mirrors

#### IN-CAR ENTERTAINMENT

- 2DIN CD player with USB, iPod and aux inputs
- Audio system with 6 speakers

#### OPTIONS AT EXTRA COST

- Metallic paint
- Stop/Start System (1.6 petrol only)

### n-tec+

#### ADDITIONAL TO ACENTA GRADE

#### TECHNOLOGY

- Nissan Connect 5" touch-screen navigation system
- Around View Monitor 360° bird-view parking assist (in lieu of RPS)
- Colour front, rear and passenger side cameras

#### STYLING

- 18" 'Onyx' alloy wheels
- Satin silver roof rails
- Aluminium pedals

#### OPTIONS AT EXTRA COST

- Metallic paint
- Stop/Start System (1.6 petrol only)

### TEKNA

#### ADDITIONAL TO n-tec+ GRADE

#### SEATING, TRIM AND STORAGE

- Graphite or Stone leather trim
- Heated front seats

#### STYLING

- 18" 'Pewter' alloy wheels

#### SAFETY

- Xenon clear lens headlamps
- Headlamp washers

#### SECURITY

- Intelligent key

#### IN-CAR ENTERTAINMENT

- 7-Speaker Bose® audio system\*

#### OPTIONS AT EXTRA COST

- Metallic paint
- Stop/Start System (1.6 petrol only)

\* Bose® audio system subwoofer replaces space saver spare wheel with puncture repair kit.





# QASHQAI+2

		1.6 petrol	1.6 petrol + Stop/Start System	2.0 petrol		1.5 dCi* 110PS	1.6 dCi* 130PS + Stop/Start System		2.0 dCi* 150PS		
MODEL		2WD		2WD	4WD	2WD	2WD	4WD	4WD		
Seating capacity	persons	7									
Available grades		All	All	n-tec+ and Tekna		All	All	n-tec+ and Tekna			
ENGINE											
Engine code		HR16DE		MR20DE		K9K-1.5	R9M - 1.6		M1D-2.0		
No. of cylinders, configuration		4, in line		4, in line		4, in line	4, in line		4, in line		
Valves per cylinder		4		4		2	4		4		
Engine capacity	cm <sup>3</sup>	1598		1997		1461	1598		1995		
Bore x stroke	mm	78x83.6		84x90.1		76x80.5	80x79.5		84x90		
Max. engine power <sup>1)</sup>	kW(PS)/rpm	86 (117)/6000		104 (140)/6000		81 (110)/4000	96 (130)/4000		110 (150)/4000		
Max. torque <sup>1)</sup>	Nm/rpm	158/4400		196/4800		240/1750	320/1750		320/2000		
Compression ratio		10.7		10.2		15.3	15.4		15.6		
Fuel type		Petrol		Petrol		Diesel	Diesel		Diesel		
Fuel tank capacity	l	65									
Fuel Supply		Multi Point Injection		Multi Point Injection		Common Rail Direct Injection	Common Rail Direct Injection		Common Rail Direct Injection		
Emission control system		3-Way catalyst		3-Way catalyst		Oxidation catalyst	Oxidation catalyst		Oxidation catalyst with Diesel Particular Filter		
Emissions level		EU5									
DRIVE TRAIN											
Transmission type		5-Speed manual		6-Speed manual		CVT	6-Speed manual		6-Speed automatic		
Clutch type	Manual	Dry plate mechanical		Dry plate mechanical		Torque converter with lock-up	Dry plate mechanical		Torque converter with lock-up		
	Auto						Dry plate mechanical				
Gear ratio	1st	3.727		3.727		2.349 ↑ ↓ 0.394	3.727		3.416	3.727	4.199
	2nd	2.048		2.105			1.947		1.850	2.043	2.405
	3rd	1.393		1.519			1.322		1.193	1.322	1.583
	4th	1.097		1.171			0.975		0.850	0.947	1.161
	5th	0.892		0.914			0.763		0.673	0.723	0.855
	6th	-		0.767			0.638		0.596	0.596	0.685
	Reverse	3.545		3.687			3.687		3.252	3.641	3.457
	Final Drive	4.500		4.438			4.438		4.428	4.266	3.360
Driven wheels		2WD		2WD		4WD (full time) / 2WD	2WD		2WD	4WD (full time) / 2WD	4WD (full time) / 2WD
CHASSIS											
Suspension	front	McPherson Strut									
	rear	Independent Multi-link									
Steering		Rack and Pinion, power assisted									
Braking system		Ventilated discs front and rear, power assisted, ABS incl EBD and Brake Assist									

\*The 1.5 dCi, 1.6 dCi & 2.0 dCi engines fitted to QASHQAI+2 include a diesel particulate filter (DPF) to reduce emissions and help protect the environment. The functionality of a DPF may not be suitable for all customers. If your journeys are predominantly urban or low speed, a model without a DPF may be a more suitable alternative.

1) In accordance with 1999/99/EC.



# QASHQAI+2

		1.6 petrol	1.6 petrol + Stop/Start System	2.0 petrol		1.5 dCi* 110PS	1.6 dCi* 130PS + Stop/Start System		2.0 dCi* 150PS	
MODEL		2WD		2WD	4WD	2WD	2WD	4WD	4WD	
Seating capacity	persons	7								
Available grades		All	All	n-tec+ and Tekna	All	All	n-tec+ and Tekna	n-tec+ and Tekna		
WEIGHTS & DIMENSIONS										
Transmission type		5-Speed manual		6-Speed manual	CVT	6-Speed manual	6-Speed manual		6-Speed automatic	
Kerb weight min./max. <sup>2)</sup>	kg	1404 / 1508	1419/1523	1476 / 1543	1583 / 1650	1511 / 1604	1626/1685	1626/1685	1732 / 1791	
Gross Vehicle Weight	kg	2072		2108	2215	2170	2255	2320	2356	
Max. payload <sup>2)</sup>	kg	565		565	565	565	565	565	565	
Max. axle weight (PAW)	front	kg	1175	1175	1175	1175	1175	1230	1230	
	rear	kg	1215	1215	1215	1215	1215	1260	1260	
Max. trailer weight	braked	kg	1200	1400	1200	1200	1400	1400	1350	
	unbraked	kg	735	750	750	750	750	750	750	
Max. vert. load on coupling point	kg	75								
Overall length	mm	4541								
Overall width	mm	1780								
Overall height	mm	1645								
Wheelbase	mm	2765								
Track	front	mm	1540							
	rear	mm	1550							
Luggage space	max. length	mm	1040 - 1230							
	max. width	mm	1100							
	max. height	mm	430							
Luggage capacity	3rd Row seats folded (VDA)	l	450							
	2nd & 3rd Row seats folded (VDA)	l	1520							
Min. turning circle (kerb to kerb)	m	11.0								
PERFORMANCE										
Fuel consumption <sup>3)</sup>	Urban cycle	mpg (l/100 km)	34.0 (8.3)	35.8 (7.9)	26.4 (10.7)	26.4 (10.7)	44.1 (6.4)	50.4 (5.6)	45.6 (6.2)	30.4 (9.3)
	Extra-urban	mpg (l/100 km)	50.4 (5.6)	50.4 (5.6)	43.5 (6.5)	41.5 (6.8)	61.4 (4.6)	68.9 (4.1)	60.1 (4.7)	47.9 (5.9)
	Combined	mpg (l/100 km)	42.8 (6.6)	44.1 (6.4)	35.3 (8.0)	34.4 (8.2)	53.3 (5.3)	60.1 (4.7)	53.3 (5.3)	39.8 (7.1)
CO2 mass emission (combined)	g/km	154	149	189	194	139	123	139	188	
Max. speed	mph (km/h)	112 (180)	112 (180)	120 (193)	112 (180)	108 (174)	117 (189)	117 (189)	116 (186)	
Acceleration 0-62mph (0 - 100 km/h)	sec	12.9	12.9	10.5	11.7	13.2	10.9	11.6	11.6	

2) Figures in accordance with EC Directive. Kerb weight condition is without driver and including coolant, oils, fuel, spare wheel and tools. Payload will be reduced depending on the options and/or accessories installed.

3) In accordance with 1999/100/EC. (Optional equipment, maintenance, driving behaviour, road and weather conditions may affect the official results)

\* The 1.5 dCi, 1.6 dCi & 2.0 dCi engines fitted to QASHQAI+2 include a diesel particulate filter (DPF) to reduce emissions and help protect the environment. The functionality of a DPF may not be suitable for all customers. If your journeys are predominantly urban or low speed, a model without a DPF may be a more suitable alternative.







We see **SHIFT\_** as an invitation. To challenge whatever feels too familiar. To open your mind to the unfamiliar. To ask the questions no-one else is asking. And to find answers no-one else can. At Nissan, we do this every day. And it shapes everything we do. The result is a line-up of vehicles that represents a pure, uncompromising shift from the ordinary.

Visit our website at:  
[www.nissan.co.uk](http://www.nissan.co.uk)

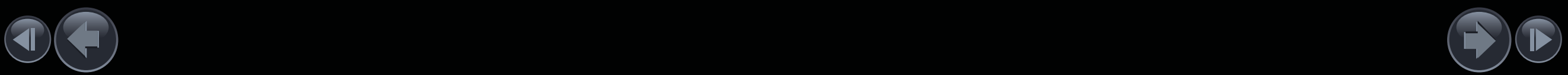
Dealer stamp:



**SHIFT\_** the way you move

Every effort has been made to ensure that the content of this publication is correct at the time of going to press (September 2011). In accordance with the company's policy of continuously improving its products, Nissan Europe reserves the right to change at any time the specification and the vehicles described and shown in this publication. Nissan dealers will be informed of any such modifications as quickly as possible. Please check with your local Nissan dealer to receive the most up-to-date information. All rights reserved. Reproduction in whole or part of this brochure without the written permission of Nissan Europe is forbidden.

Part Number 99999-54033. Printed in the UK.





[Contents](#) | [Exterior design](#) | [Interior design](#) | [Technology & performance](#) | [Style & accessories](#) | [Technical Specifications](#) | [Price List](#) | [Commitments](#)

[Print](#) | [Close](#)

[Qashqai Model and option prices](#) | [Qashqai+2 Model and option prices](#) | [CO2 emissions](#) | [Further Information](#)





Doorplan	Grade	Engine	Transmission	Basic Price	VAT	Total Retail	On The Road Price
5 door	VISIA	1.6 117PS	5 manual	13,591.67	2,718.33	16,310	16,495
			CVT	14,675.00	2,935.00	17,610	17,795
		1.6 117PS + Stop/Start System	5 manual	13,812.50	2,762.50	16,575	16,745
		1.5 dCi 110PS	6 manual	15,020.83	3,004.17	18,025	18,195
		2.0 140PS	6 manual	14,854.17	2,970.83	17,825	18,195
			CVT	15,937.50	3,187.50	19,125	19,495
		1.6 dCi 130PS + Stop/Start System	6 manual	16,366.67	3,273.33	19,640	19,695
	VISIA PURE DRIVE 130g	1.5 dCi 110PS	6 manual	14,950.00	2,990.00	17,940	17,995
	ACENTA	1.6 117PS	5 manual	14,841.67	2,968.33	17,810	17,995
			CVT	15,925.00	3,185.00	19,110	19,295
		1.6 117PS + Stop/Start System	5 manual	15,062.50	3,012.50	18,075	18,245
		1.5 dCi 110PS	6 manual	16,270.83	3,254.17	19,525	19,695
		2.0 140PS	6 manual	16,104.17	3,220.83	19,325	19,695
			CVT	17,187.50	3,437.50	20,625	20,995
1.6 dCi 130PS + Stop/Start System		6 manual	17,616.67	3,523.33	21,140	21,195	



Doorplan	Grade	Engine	Transmission	Basic Price	VAT	Total Retail	On The Road Price
5 door	n-tec+	1.6 117PS	5 manual	16,383.33	3,276.67	19,660	19,845
			CVT	17,466.67	3,493.33	20,960	21,145
		1.6 117PS + Stop/Start System	5 manual	16,604.17	3,320.83	19,925	20,095
		1.5 dCi 110PS	6 manual	17,812.50	3,562.50	21,375	21,545
		2.0 140PS	6 manual	17,645.83	3,529.17	21,175	21,545
			CVT	18,729.17	3,745.83	22,475	22,845
			CVT 4WD	19,912.50	3,982.50	23,895	24,395
		1.6 dCi 130PS + Stop/Start System	6 manual	19,158.33	3,831.67	22,990	23,045
			6 manual 4WD	20,354.17	4,070.83	24,425	24,595
	2.0 dCi 150PS	6 auto 4WD	21,187.50	4,237.50	25,425	25,795	
	TEKNA	1.6 117PS	5 manual	17,466.67	3,493.33	20,960	21,145
			CVT	18,550.00	3,710.00	22,260	22,445
		1.6 117PS + Stop/Start System	5 manual	17,687.50	3,537.50	21,225	21,395
		1.5 dCi 110PS	6 manual	18,895.83	3,779.17	22,675	22,845
		2.0 140PS	5 manual	18,729.17	3,745.83	22,475	22,845
			CVT	19,812.50	3,962.50	23,775	24,145
			CVT 4WD	20,995.83	4,199.17	25,195	25,695
		1.6 dCi 130PS + Stop/Start System	6 manual	20,241.67	4,048.33	24,290	24,345
6 manual 4WD			21,437.50	4,287.50	25,725	25,895	
2.0 dCi 150PS	6 auto 4WD	22,270.83	4,454.17	26,725	27,095		

Basic and Total Retail includes delivery to the Dealership and number plates. On the Road Price includes 12 months Government Vehicle Excise Duty (determined by CO<sub>2</sub> emissions figure and fuel type- see back page for details) and £55 Government First Registration Fee.





# QASHQAI OPTIONS

	VISIA	ACENTA	n-tec+	TEKNA	Basic	VAT	Total
Metallic, pearlescent or black paint	○	○	○	○	412.50	82.50	495
Nissan Connect (with colour reversing camera)		○	●	●	583.33	116.67	700
Delivery Pack (velour carpet mats, spare bulb and fuse kit, Nissan care pack <sup>^</sup> )	□	□	□	□	41.67	8.33	50
Protection Pack (velour carpet mats, mudguards - front and rear, soft trunkliner)	□	□	□	□	124.99	25.00	150
Style Pack (front styling plate, chrome fog lamp rings, chrome mirror caps, chrome side strips)	□	□	□	□	375.00	75.00	450
Urban Pack (front styling plate, rear styling plate, chrome side strips)	□	□	□	□	316.67	63.33	380
LED Daytime running lights	□	□	□	□	400.00	80.00	480
Front park sensors	□	□	□	□	304.17	60.83	365
Chromed stainless steel side bars	□	□	□	□	510.83	102.17	613
Chrome side strips	□	□	□	□	148.33	29.67	178
Chrome rear door grip cover (prices from)	□	□	□	□	80.00	16.00	96
Chrome fog lamp rings	□	□	□	□	88.33	17.67	106
Chrome strip for tailgate	□	□	□	□	75.00	15.00	90
Tailgate entry guard	□	□	□	□	107.50	21.50	129
Partition rack / dog guard	□	□	□	□	171.67	34.33	206
Roof Bars (prices from)	□	□	□	□	127.50	25.50	153
Fixed towbar (with 7 pin TEK)	□	□	□	□	290.83	58.17	349
iPod connector*	□				142.50	28.50	171
Spare wheel space saver kit (Includes wheel, jack, jack rod, wheel brace excludes spare tyre)	□	□	□	□	93.33	18.67	112

Optional - ○ Standard - ● Optional Dealer Fit - □

<sup>^</sup> Nissan care pack includes: Nissan branded toggle bag, large car wash sponge, wash 'N' wax sachet, screen bug shifter sponge, chamoix de-mister pad, screenwash sachet, pocket torch (including batteries)

\* Includes cradle and fitting bracket for iPod. Integrates with vehicle's audio.

Dealer fit option prices include fitting but are only a guide. Please check with your local Nissan dealer for exact prices.







Doorplan	Grade	Engine	Transmission	Basic Price	VAT	Total Retail	On The Road Price
5 door	VISIA	1.6 117PS	5 manual	14,729.17	2,945.83	17,675	17,895
		1.6 117PS + Stop/Start System	5 manual	14,966.67	2,993.33	17,960	18,145
		1.5 dCi 110PS	6 manual	16,187.50	3,237.50	19,425	19,595
		2.0 140PS	6 manual	15,954.17	3,190.83	19,145	19,645
		1.6 dCi 130PS + Stop/Start System	6 manual	17,533.33	3,506.67	21,040	21,095
	ACENTA	1.6 117PS	5 manual	16,229.17	3,245.83	19,475	19,695
		1.6 117PS + Stop/Start System	5 manual	16,466.67	3,293.33	19,760	19,945
		1.5 dCi 110PS	6 manual	17,687.50	3,537.50	21,225	21,395
		2.0 140PS	6 manual	17,454.17	3,490.83	20,945	21,445
		1.6 dCi 130PS + Stop/Start System	6 manual	19,033.33	3,806.67	22,840	22,895
	n-tec+	1.6 117PS	5 manual	17,312.50	3,462.50	20,775	20,995
		1.6 117PS + Stop/Start System	5 manual	17,550.00	3,510.00	21,060	21,245
		2.0 140PS	6 manual	18,770.83	3,754.17	22,525	22,695
			CVT 4WD	18,537.50	3,707.50	22,245	22,745
		1.6 dCi 130PS + Stop/Start System	6 manual	20,912.50	4,182.50	25,095	25,595
			6 manual 4WD	20,116.67	4,023.33	24,140	24,195
		2.0 dCi 150PS	6 manual 4WD	21,312.50	4,262.50	25,575	25,745
		6 auto 4WD	22,079.17	4,415.83	26,495	26,995	



Doorplan	Grade	Engine	Transmission	Basic Price	VAT	Total Retail	On The Road Price
5 door	TEKNA	1.6 117PS	5 manual	18,354.17	3,670.83	22,025	22,245
		1.6 117PS + Stop/Start System	5 manual	18,591.67	3,718.33	22,310	22,495
		1.5 dCi 110PS	6 manual	19,812.50	3,962.50	23,775	23,945
		2.0 140PS	6 manual	19,579.17	3,915.83	23,495	23,995
			CVT 4WD	21,954.17	4,390.83	26,345	26,845
		1.6 dCi 130PS + Stop/Start System	6 manual	21,158.33	4,231.67	25,390	25,445
			6 manual 4WD	22,354.17	4,470.83	26,825	26,995
		2.0 dCi 150PS	6 auto 4WD	23,120.83	4,624.17	27,745	28,245

Basic and Total Retail includes delivery to the Dealership and number plates. On the Road Price includes 12 months Government Vehicle Excise Duty (determined by CO<sub>2</sub> emissions figure and fuel type- see back page for details) and £55 Government First Registration Fee.





# QASHQAI+2 OPTIONS

	VISIA	ACENTA	n-tec+	TEKNA	Basic	VAT	Total
Metallic, pearlescent or black paint	○	○	○	○	412.50	82.50	495
Nissan Connect (with reversing camera)		○	●	●	583.33	116.67	700
Delivery Pack (velour carpet mats, spare bulb and fuse kit, Nissan care pack <sup>^</sup> )	□	□	□	□	41.67	8.33	50
Protection Pack (Velour carpet mats, mudguards - front and rear, soft trunkliner)	□	□	□	□	124.99	25.00	150
Style Pack (front styling plate, chrome fog lamp rings, chrome mirror caps, chrome side strips)	□	□	□	□	391.67	78.33	470
Urban Pack (front styling plate, rear styling plate, chrome side strips)	□	□	□	□	325.00	65.00	390
LED Daytime running lights	□	□	□	□	400.00	80.00	480
Front park sensors	□	□	□	□	304.17	60.83	365
Mudguards - front and rear	□	□	□	□	76.67	15.33	92
Front door entry guards	□	□	□	□	145.00	29.00	174
Chromed stainless steel side bars	□	□	□	□	492.50	98.50	591
Chrome side strips	□	□	□	□	169.17	33.83	203
Chrome rear door grip cover (prices from)	□	□	□	□	80.00	16.00	96
Chrome fog lamp rings	□	□	□	□	88.33	17.67	106
Chrome strip for tailgate	□	□	□	□	75.00	15.00	90
Tailgate entry guard	□	□	□	□	110.83	22.17	133
Roof bars (prices from)	□	□	□	□	149.17	29.83	179
Fixed towbar (with 7 pin TEK)	□	□	□	□	290.83	58.17	349
iPod connector*	□				142.50	28.50	171

Optional - ○ Standard - ● Optional Dealer Fit - □

<sup>^</sup> Nissan care pack includes: Nissan branded toggle bag, large car wash sponge, wash 'N' wax sachet, screen bug shifter sponge, chamoix de-mister pad, screenwash sachet, pocket torch (including batteries)

\* Includes cradle and fitting bracket for iPod. Integrates with vehicle's audio.

Dealer fit option prices include fitting but are only a guide. Please check with your local Nissan dealer for exact prices.



# CO2 MASS EMISSIONS

Vehicle	Engine	Transmission	Body Style	CO <sub>2</sub> Mass Emissions g/km	12 months Vehicle Excise Duty
QASHQAI	1.6 117PS	5 manual	5 door	144	£130
		CVT	5 door	149	£130
	1.6 117PS + Stop/Start System	5 manual	5 door	139	£115
	1.5 dCi 110PS	6 manual	5 door	137	£115
	Pure Drive 1.5 dCi 110PS	6 manual	5 door	130	£0
	2.0 140PS	6 manual	5 door	184	£315
		CVT	5 door	179	£315
		CVT 4WD	5 door	189	£445
	1.6 dCi 130PS + Stop/Start System	6 manual	5 door	119	£0
		6 manual 4WD	5 door	135	£115
2.0 dCi 150PS	6 auto 4WD	5 door	184	£315	
QASHQAI+2	1.6 117PS	5 manual	5 door	154	£165
	1.6 117PS + Stop/Start System	5 manual	5 door	149	£130
	1.5 dCi 110PS	6 manual	5 door	139	£115
	2.0 140PS	6 manual	5 door	189	£445
		CVT 4WD	5 door	194	£445
	1.6 dCi 130PS + Stop/Start System	6 manual	5 door	123	£0
		6 manual 4WD	5 door	139	£115
2.0 dCi 150PS	6 auto 4WD	5 door	188	£445	





# NISSAN INSURANCE

Nissan Insurance has been designed to help Nissan drivers get the most from their cover, boasting the following benefits:

- Competitive premiums
- All repairs carried out within the Nissan Approved Repairer Network
- Only genuine Nissan replacement parts used
- The opportunity to use a courtesy car for the duration of any repairs, when you use an approved repairer (subject to availability)
- Convenient instalment plans, subject to status
- EU cover included
- 24-hour UK based claims helpline

Call Nissan Insurance today on **0845 603 4394**

Nissan Insurance is arranged and administered by Equity Insurance Brokers Limited, which is authorised and regulated by the Financial Services Authority. Registered Office: Library House, New Road, Brentwood, Essex CM14 4GD. Registered in England No. 258414. Nissan Motor (GB) Limited is authorised and regulated by the Financial Services Authority. All quotes are based on individual circumstances and are subject to insurer's underwriting criteria. Terms and conditions apply.



# FURTHER INFORMATION

**On The Road Prices.** On The Road Price includes 12 months Government Vehicle Excise Duty (VED) determined by CO<sub>2</sub> emissions figure and fuel type, £55 Government First Registration Fee, number plates and delivery to the Nissan Dealership.

VED rates are determined by the vehicles CO<sub>2</sub> emissions figures and by the type of fuel used. The following table applies to all new car registrations:

VED Band	A	B	C	D	E	F	G	H	I	J	K	L	M
CO <sub>2</sub> Emissions Figure (g/km)*	up to 100g	101-110g	111-120g	121-130g	131-140g	141-150g	151-165g	166-175g	176-185g	186-200g	201-225g	226-255g	over 255g
Petrol Car	£0	£0	£0	£0	£115	£130	£165	£265	£315	£445	£580	£790	£1,000
Diesel Car	£0	£0	£0	£0	£115	£130	£165	£265	£315	£445	£580	£790	£1,000
Alternative Fuel Car	£0	£0	£0	£0	£105	£120	£155	£255	£305	£435	£570	£780	£990

\* g/km = grammes of CO<sub>2</sub> per kilometre travelled.

All Light Commercial Vehicles will have a standard VED rate of £210 per annum.

**Optional equipment.** This price list features a selection from the full range of optional equipment, be they standard, dealer fit or factory options.

For further information and details of the full range, please contact your local Authorised Nissan Dealer.

**Nissan's** commitment to you includes all of the following benefits – some of which may be the reasons why you chose your new Nissan in the first place:

**Three-year/60,000 miles manufacturer's warranty** – Nissan's comprehensive warranty provides cover for your new Nissan from defects in materials or workmanship. Your vehicle is covered in all European Countries where Authorised Nissan Dealers are located. If your vehicle becomes inoperative due to a warrantable defect a towing service, when necessary, to the Authorised Nissan Dealer is covered. If a warrantable defect abroad takes more than six hours to repair, the Touring Assistance Programme will pay for a hotel room or rental car up to a certain maximum. The paint warranty covers painted body parts (excluding the underbody) for three years regardless of mileage driven. For further details please contact your local Authorised Nissan Dealer.

**NV200 Combi** - New Vehicle Warranty is issued by Nissan International SA is valid for 3 years from the warranty start date or 60,000 miles, whichever comes first. In addition, for each new NV200 Combi sold by an authorised UK Nissan dealer, Nissan Motor (GB) Limited (NMGB) will issue an extension to the New Vehicle Warranty. This warranty extension will cover your vehicle from 60,000 miles up to 100,000 miles or 3 years from the warranty start date, whichever comes first. Please note that audio and navigation units will not be covered by the warranty extension.





# FURTHER INFORMATION

**Nissan European Roadside Assistance** is provided for the 1st 3 years of your vehicle's life.

Roadside, Recovery and At Home products are provided by RAC Motoring Services (Registered No. 1424399, Registered Office: 8 Surrey Street, Norwich, NR1 3NG). RAC Motoring Services (in respect of insurance mediation activities only) is authorised and regulated by the Financial Services Authority and within the jurisdiction of the Financial Ombudsman Service and Financial Services Compensation Scheme.

Onward Travel and European Cover are underwritten by RAC Insurance Limited (Registered No. 1424399, Registered Office: 8 Surrey Street, Norwich, NR1 3NG). RAC Insurance Limited is authorised and regulated by the Financial Services Authority and within the jurisdiction of the Financial Ombudsman Service and Financial Services Compensation Scheme.

**Peace of mind** – we always guarantee our workmanship, and all genuine Nissan replacement parts and accessories have a minimum of one year's warranty. Accessory prices are subject to change, please see your nearest dealership for the most up to date prices

Our technicians have been trained by Nissan to work on your vehicle and they are the Nissan specialists. They use the latest equipment to ensure your vehicle is given the best treatment. Accessory prices are subject to change, please see your nearest dealership for the most up to date prices.

**Recyclability** – we take all our environmental responsibilities very seriously - innovation today comes with a deep respect for the environment. Our engines are now much more unobtrusive and their emissions have been considerably reduced. All our vehicles are designed with recycling in mind.

**Nissan Finance** offers a wide range of flexible finance schemes to meet the needs of both our retail and business customers. Preferences, Hire Purchase, Nissan Contract Hire and Finance Lease, all offer the in-built flexibility to make the package tailor-made to meet your individual needs. We also provide added security to your finance agreement with a comprehensive range of payment protection plans. Ask your local Authorised Nissan Dealer for details.

**The Nissan Motability Programme** developed in association with the registered charity Motability enables those with difficulty getting around to obtain selected models on preferential terms.

All prices in this list are quoted in pounds sterling. Value Added Tax (VAT) has been calculated at 20%.

While all reasonable effort has been made to ensure the accuracy of the information provided, due to Nissan's policy of continuous product improvement, all particulars contained are subject to constant revision and Nissan reserves the right to change, alter or modify, among other things, specifications, colours and prices of models without notice at any time. Accordingly you should consult your local Authorised Nissan Dealer for the exact introduction dates of all models and for the most up-to-date information.

Images shown are for guidance purposes. In some instances photos are of non UK specification vehicles and do not represent a specific model, grade or offer.





**YOU + NISSAN**

# CARE

You care about the car you drive. So do we. That's why we're making a commitment to providing the best customer service in the market.

**Find out more [nissan.co.uk/care](http://nissan.co.uk/care)**





Nissan cares for you because you care about your Nissan.  
That's why we'll make the following commitment:

**YOU** care about staying on the road when your Nissan is in for service or repair.

**YOU** care about quality enough to have your Nissan serviced at a Nissan dealership.

**YOU** care about getting the best value for money when it comes to service and repair.

**YOU** care about having your problems resolved quickly.

**YOU** care about getting the right Nissan model, engine & gearbox to test drive.

**NISSAN** will keep you mobile free of charge.

**NISSAN** says thanks by giving you continuous Nissan roadside assistance for free.

**NISSAN** will price match like for like competitor written quotes within 10 miles of your local dealer.

**NISSAN** will propose how to resolve any problem within 2 working days.

**NISSAN** will guarantee that's what you'll get when you pre-book your test drive either online or through our customer service centre.

Find out more [nissan.co.uk/care](http://nissan.co.uk/care)





MICRA



JUKE



X-TRAIL

SHIFT\_ is an English word from a Japanese car company that best embraces our values and the mission of this corporation. No matter where you are in the world, SHIFT\_ is the way we express who we are, how we work and what we are trying to accomplish.

Everything we touch, we SHIFT\_. And everything we SHIFT\_ we try to make better and uniquely Nissan.

## NISSAN MOTOR (GB) LIMITED

The Rivers Office Park  
Denham Way  
Maple Cross  
Rickmansworth  
Hertfordshire  
WD3 9YS

Visit our website at: [www.nissan.co.uk](http://www.nissan.co.uk)

Dealer stamp:



Part Number: 99999-54043

Prices effective from 1st March 2012 unless otherwise stated.

